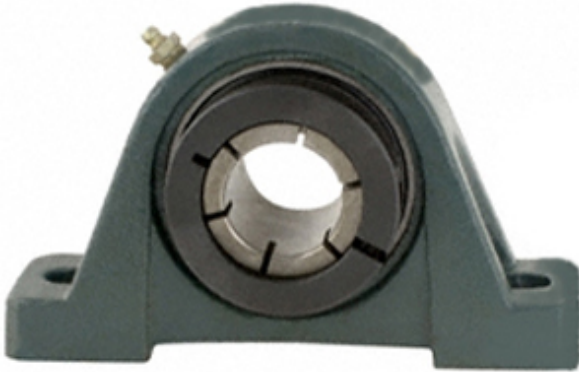




NTN BEARING DRIVESHAFT,INC.



3.438 Inch | 87.325 Millimeter x 2.656 Inch |
67.462 Millimeter x 4 Inch | 101.6 Millimeter
DODGE P2B-DLMAH-307 Pillow Block Bearings

Bearing No. P2B-DLMAH-307

P2B-DLMAH-307 Bearing 2D drawings and 3D CAD models

Category	Pillow Block Bearings
Inventory	0.0
Manufacturer Name	ABB MOTORS AND MECHANICAL INC
Minimum Buy Quantity	N/A
Weight	13.771
EAN	0782475971954
Product Group	M06110
Number of Mounting Holes	2
Mounting Method	Concentric Collar
Housing Style	2 Bolt Pillow Block
Rolling Element	Ball Bearing
Housing Material	Cast Iron
Expansion / Non-expansion	Non-expansion
Mounting Bolts	7/8 Inch
Relubricatable	Yes
Insert Part Number	INS-DLM-307
Seals	Single Lip Contact
Housing Configuration	1 Piece Solid
Inch - Metric	Inch
Other Features	Single Row Medium Duty Air Handling Wide Inner Race
Long Description	2 Bolt Pillow Block; 3-7/16" Bore; 4" Base to Center Height; Concentric Collar



NTN BEARING DRIVESHAFT,INC.

	Mount; Ball Bearing; 10-5/16" Minimum Bolt Spacing; 11-5/8" Bolt Spacing Maximum; Relubricatable; Cas
Category	Pillow Block
UNSPSC	31171511
Harmonized Tariff Code	8483.20.40.40
Noun	Bearing
Keyword String	Pillow Block
Manufacturer URL	http://www.dodge-pt.com
Manufacturer Item Number	P2B-DLMAH-307
Manufacturer Internal Number	128490
Weight / LBS	34.9
Actual Bolt Center to Center	0 Inch 0Millimeter
Nominal Bolt Center to Center	11.1 Inch 283 Millimeter
Bolt Spacing Minimum	10.313 Inch 261.95Millimeter
D	2.656 Inch 67.462 Millimeter
B	4 Inch 101.6 Millimeter
d	3.438 Inch 87.325 Millimeter
Bolt Spacing Maximum	11.625 Inch 295.275Millimeter