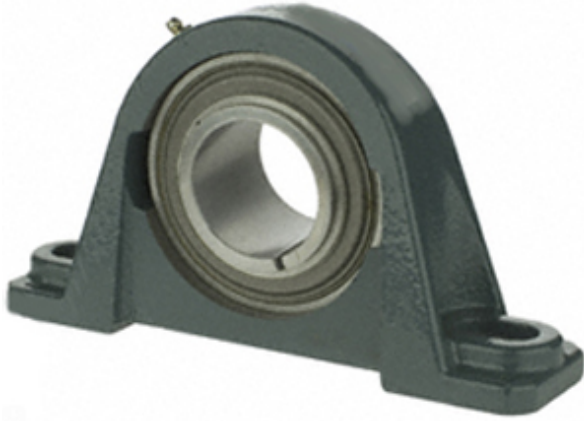




## NTN BEARING DRIVESHAFT,INC.

1.181 Inch | 30 Millimeter x 1.626 Inch | 41.3  
Millimeter x 1.874 Inch | 47.6 Millimeter DODGE  
P2B-GTMAH-30M Pillow Block Bearings



Bearing No. P2B-GTMAH-30M

P2B-GTMAH-30M Bearing 2D drawings and 3D CAD  
models

Category	Pillow Block Bearings
Inventory	0.0
Manufacturer Name	ABB MOTORS AND MECHANICAL INC
Minimum Buy Quantity	N/A
Weight	1.334
EAN	0782476314828
Product Group	M06110
Number of Mounting Holes	2
Mounting Method	Tapered Adapter Sleeve
Housing Style	2 Bolt Pillow Block
Rolling Element	Ball Bearing
Housing Material	Cast Iron
Expansion / Non-expansion	Non-expansion
Mounting Bolts	12 Millimeter
Relubricatable	Yes
Insert Part Number	INS-GTM-30M
Seals	Single Lip Contact
Housing Configuration	1 Piece Solid
Inch - Metric	Metric
Other Features	Single Row   Medium Duty   Air Handling   Wide Inner Race   Thin Wall
Long Description	2 Bolt Pillow Block; 30MM Bore; 47.6MM Base to Center Height; Tapered



## NTN BEARING DRIVESHAFT,INC.

	Adapter Sleeve Mount; Ball Bearing; 119.1MM Minimum Bolt Spacing; 138.1MM Bolt Spacing Maximum; Relubricatable; Cast Iron; Single
Category	Pillow Block
UNSPSC	31171511
Harmonized Tariff Code	8483.20.40.40
Noun	Bearing
Keyword String	Pillow Block
Manufacturer URL	<a href="http://www.dodge-pt.com">http://www.dodge-pt.com</a>
Manufacturer Item Number	P2B-GTMAH-30M
Weight / LBS	4.85
D	1.626 Inch   41.3 Millimeter
d	1.181 Inch   30 Millimeter
Bolt Spacing Minimum	4.689 Inch   119.1Millimeter
Nominal Bolt Center to Center	5 Inch   127 Millimeter
B	1.874 Inch   47.6 Millimeter
Bolt Spacing Maximum	5.437 Inch   138.1Millimeter
Actual Bolt Center to Center	0 Inch   0Millimeter